



LED LIGHTING

PRODUCT CATALOG



4 YEARS
OF
EXCELLENCE

**“Pyrotech is not just a company, it’s a journey.
Journey that has yielded experience”**

PYROTECH GROUP & UNIT-1

PYROTECH GROUP

Pyrotech (an Osram Partner & ZED Certified) is a leading manufacturing company, in the field of LED lighting, LED Display, CCMS, Occupancy Sensor, CCTV, Process Control Instrument, Panels & Temperature sensor, Fire alarm System (Established in 1976).

PYROTECH ELECTRONICS UNIT-1

It caters to both commercial and institutional consumers and offers comprehensive lighting solutions across various applications areas. Since inception in 1976 Pyrotech group registered an average sales growth of 55%. Our quality products are manufactured with latest machinery in our 100,000 sq.ft. modern facility.

PYROTECH ELECTRONICS PVT. LTD.- UNIT-II & IV:

Manufactures - Electricians Panels, control panels, control desks and industrial furniture.

TEMPSSENS INSTRUMENTS (I) PVT. LTD., UNIT-I & II:

Manufactures - Thermocouple, RTD, Non Contact Pyrometer, Temperature Calibrators, High Temperature Cables, Industrial Heaters, Thermal imager etc.



Pyrotech Electronics Unit-I



Pyrotech Electronics Unit-II



Tempsens Instruments Unit-I

OUR INFRASTRUCTURE



JUKI SMD LINE-1



SAMSUNG SMD LINE-2



EMI/EMC TEST LAB



HIGH VOLTAGE TEST



PHOTOMETRY LAB



SURGE TEST MACHINE

ABOUT

Pyrotech (an OSRAM partner & ZED certified) is an industrial luminaire manufacturing company, in the field of LED lighting, High mast, Pressure Transmitter, Occupancy Sensor, CCTV, Fire alarm system, Process Control instrument, LED Drivers, LED Display, Control Panels & Temperature sensor & Blood Bank Equipment's.

Some of our key customers are NTPC, BHEL, SAIL, GAIL, BALCO, VSP, NPCIL, OPTCL, GETCO, NWR, ICAR, IOCL, OCL, MDL, CIL, RSRM, AAI, MCGM, PT Essar, L&T etc.

We are also empaneled with following organizations.

POWER – NTPC, BHEL, GSECL, EESL, IREL, Jodhpur discom, Ajmer discom, APGENCO, MAHAGENCO, TANGEDCO, MSECL, UPCL, MP, MPPTCL, MSPGCL, SJVN, OPTCL,PGCIL etc.

CEMENT – Ultratech , Ambuja, Shree, Birla, Binani, J.K., Dangote-Nigeria etc.

STEEL & ALUMINIUM – MECON, SAIL, BALCO, VSP, GAIL, PT Essar- Indonesia.

OIL & GAS – EIL, MAHANAGER GAS, ONGC, IOCL, BPCL, HPCL, KNPC-Kuwait.

RAILWAY – NER, SER, ECR, NCR, Northwestern.

PWD – Raj, UP, Maharashtra, Chattisgarh, Tamilnadu, M.P., West Bengal, Punjab.

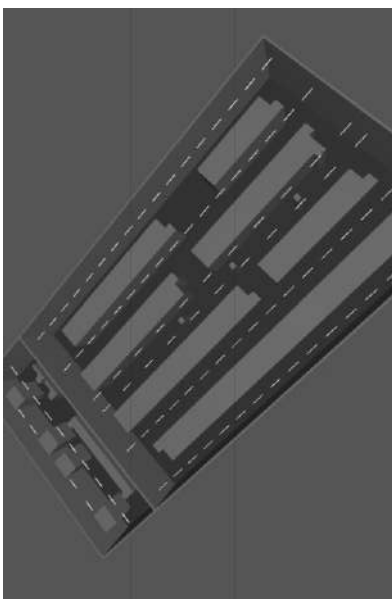
MUNICIPAL CORPORATION – PMC, PCMC, MCJ, MCF, MCGM.

WHY US...?

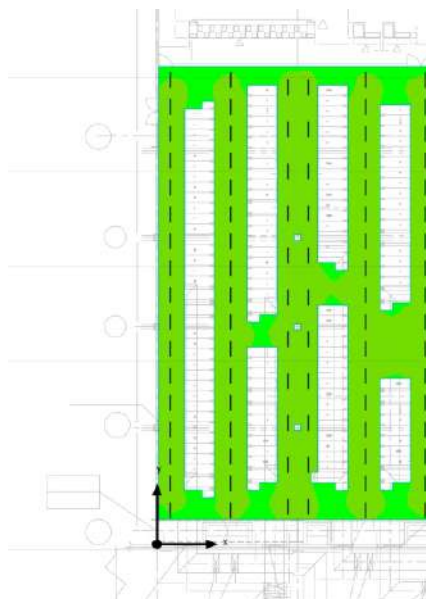
Our luminaries have various advantages as described below:

- Surge protection > 10kV, which ensures maximum protection against high voltage surges (very common in India).
- **NABL Accredited Company**
- In house testing facility - EMI/EMC, Surge, HV, Photometry.
- LED Drivers, an integral part of lights, are manufactured using state-of-the-art automated in house SMT machines.
- All the lights are tested at in-house light testing lab.
- 2 Year warranty.
- 440V AC Protection.
- Certifications such as IS10322, IP65, IEC 61000, LM79, Surge Test, Photometry from external test labs.
- Drivers tested for following IEC Certification : 61000-4-2, 61000-4-3, 61000-4-4, 61000-4-5, 61000-4-6, 61000-4-8 & 61000-4-11.
- Drivers tested for following IEC Compliance :- 61347-2-13, 62384, CISPR 15/EN55015.
- Power Factor > 0.9

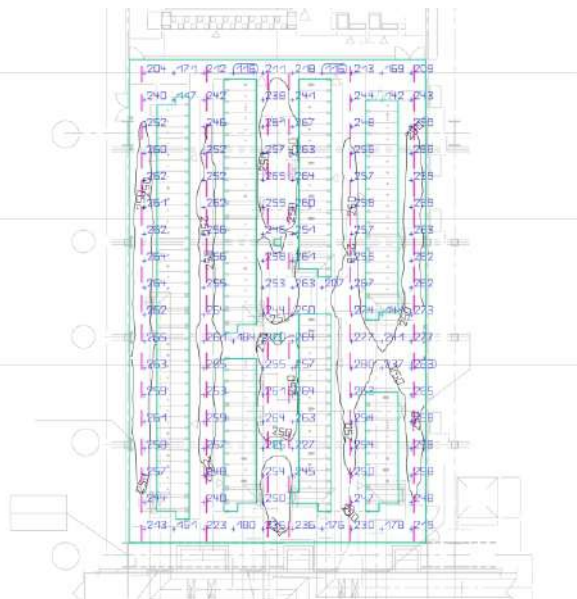
LIGHTING LAYOUT DESIGN



3D LAYOUT



FALSE COLOR RENDERING



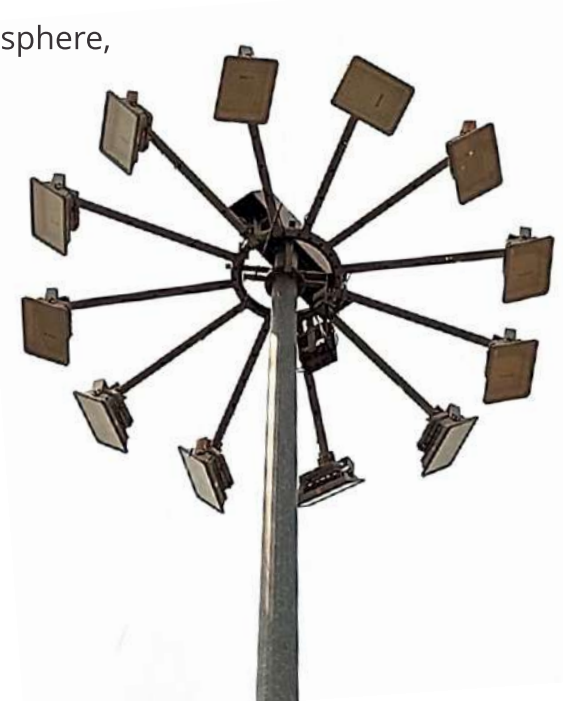
LUX LEVEL CALCULATION

OUTDOOR LIGHTING

HIGH MAST LIGHT

Pyrotech offers an high mast light ideal for corrosive atmosphere, hot dipped galvanized high strength, light weight product.

- Wattage-350-500W
- Range 20 - 30 meter
- One high mast set having- 6/12 nos of light
- Double ring-6 nos lights on 1 ring
- Wind speed capacity 180km/hr
- Loco box included
- Aviation light on each high mast- 6 nos
- High efficiency light
- Energy saving 85%
- High power LEDs light



MOVEABLE - LIGHT TOWER



FEATURES

- 70% Fuel saving with LED flood light
- Easy availability of spare parts anywhere in India.
- Cost effective and quick engine service.
- Dual power light tower grid & Diesel/Petrol engine.
- Long intervals in service & Maintenance.
- Dedicated call center for complaints.
- Fuel consumption 0.5 /1.0/2.0 lt/hr.
- Light coverage 5000/8000/10000 m².

OUTDOOR LIGHTING

SOLAR STREET LIGHT (ALL IN ONE)



SOLAR STREET LIGHT (ALL IN ONE)

Wattage	10W	20W	30W	40/60W
Model Number	PH-11-A-L-WXOA			
Battery	10 AH	15 AH	24.21 AH	30/80 AH
Dimensions (LXWXH)mm	400X210X50	500X230X45	630X250X45	1090X363X44

DC EMERGENCY LIGHT

Flame Proof LED Well Glass

LED Bulk Head

LED Flood Light



OUTDOOR LIGHTING



STREET LIGHT (IP-65) FRAME MODEL

Wattage	10-45W	50-60W
Model Number	PE-11-D-L-WXOA	
Supply	140-270V AC	
Dimensions (LXWXH)mm	324X102X51	375X146X72

STREET LIGHT (IP-65) FRAME MODEL

Wattage	80-120W	150-180W	200-250W
Model Number	PE-11-D-L-WXOA		
Supply	140-270V AC		
Dimensions (LXWXH)mm	420X196X85	500X245X70	515X260X82



STREET LIGHT (IP-65) GLASS MODEL

Wattage	10-45W	50-60W
Model Number	PE-11-D-L-WXOA	
Supply	140-270V AC	
Dimensions (LXWXH)mm	324X102X51	364X137X52

STREET LIGHT (IP-65) GLASS MODEL

Wattage	80-100W	110-120W	150-180W
Model Number	PE-11-D-L-WXOA		
Supply	140-270V AC		
Dimensions (LXWXH)mm	415X198X64	420X196X74	500X245X70



OUTDOOR LIGHTING

FLOOD LIGHT

Wattage	10-30W	40-50W	60-70W
Model Number	PD-17-D-L-WXOA		
Supply	140-270V AC, 110/220V DC		
Dimensions (LXWXH)mm	160X155X42	213X203X46	180X200X60



FLOOD LIGHT

Wattage	80-120W	130-150W	180-200W
Model Number	PD-17-D-L-WXOA		
Supply	140-270V AC, 110/220V DC		
Dimensions (LXWXH)mm	248X282X50	308X286X63	343X323X68



FLOOD LIGHT

Wattage	200-250W	300-400W	500W
Model Number	PD-17-D-L-WXOA		
Supply	140-270V AC, 110/220V DC		
Dimensions (LXWXH)mm	302X407X75	480X430X110	595X395X70



RECHARGEABLE FLOOD LIGHT

Wattage	10W	20W	40W	50-60W
Model Number	PD-18-P-L-WXOA			
Battery	4.4 AH	4.4/6.6 AH	6.6 AH	20.8 AH
Dimensions (LXWXH)mm	243X115X110	282X179X110	318X202X114	241X300X72



OUTDOOR LIGHTING



POST TOP LANTERN

Wattage	20-40W	50W
Model Number	PE-13-D-L-WXOA	
Supply	140-270V AC	
Dimensions (DiaXH)mm	280X350	410X450

GARDEN / PATHWAY LIGHT

Wattage	8/12W
Model Number	PD-15-D-L-WXOA
Supply	140-270V AC
Dimensions (DiaXH)mm	102X495



SEARCH LIGHT (SECURITY APPLICATIONS)

Wattage	150W
Model Number	PU-17-D-L-WXOA
Supply	230V AC
Dimensions (DiaXH)mm	320X165

EXIT LIGHT

Wattage	3W	12W
Model Number	PG-11-D-L-WXOA	
Supply	140-270V AC	
Dimensions (LXWXH)mm	227X310X10	360X55X180



INDUSTRIAL LIGHTING

EMERGENCY EXIT LIGHT

Wattage	2X10/2X20W
Model Number	PG-11-D-L-WXOA
Supply	12/140-270V AC
Dimensions (LXWXH)mm	863X736X178



FLAME PROOF WELL GLASS (ZONE II B, C)

Wattage	25-60W	80-120W	130-150W
Model Number	PF-11-D-L-WXOA		
Supply	140-270V AC, 110/220V DC		
Dimensions (DiaXD)mm	140X148	305X147	300X192

FLAME PROOF TUBE LIGHT (ZONE II B, C)

Wattage	20W	2X20W
Model Number	PC-14-D-L-WXOC	
Supply	140-270V AC, 110/220V DC	
Dimensions (LXWXH)mm	1385X160X150	1385X815X150



FLAME PROOF HAND LAMP (ZONE II B,C)

Wattage	15-20W
Model Number	PK-11-P-L-WXOA
Supply	140-270V AC
Dimensions	127(Dia)X380(H)

INDUSTRIAL LIGHTING



HAND LAMP (CONFINED SPACE APPLICATION DURING SHUTDOWN)

Wattage	7W (GLASS)	20W (GLASS)	12W (ACRYLIC)
Model Number	PK-11-D-L-WXOA		PK-11-D-L-WXOB
Supply	24/140-270V AC		
Dimensions (DiaXH)mm	102X258	102X268	102X212

TRIPROOF LIGHT

Wattage	2X10W	2X20W
Model Number	PC-14-D-L-WXOB	
Supply	90-270V AC	
Dimensions (ft)	~2	~12



NON FLAME PROOF WELL GLASS

Wattage	15-45W	50-60W	70-90W
Model Number	PF-11-D-L-WXOB		
Supply	140-270V AC, 110/220V DC		
Dimensions (DiaXH)mm	133X115	154X154	176X183

AVIATION LIGHT

Wattage	6/14W	2X6/2X14W
Model Number	PG-12-D-L-WXOA	
Supply	140-270V AC	
Dimensions (DiaXLXH)mm	175X260	175X460X250



INDUSTRIAL LIGHTING

HELMET LIGHT

Wattage	2W
Model Number	PQ-11-P-L-WXOA
Battery	2.2 AH Battery (Lithium - ion)
Dimensions (ØXHXW)mm	280X212X125



TRAFFIC LIGHT

Wattage	5W	9W
Model Number	PJ-11-D-L-WXOOA	
Supply	230V AC	
Dimensions (Ø)mm	200	300

BULK HEAD

Wattage	10-15W
Model Number	PP-11-D-L-WXOA
Supply	230V AC/220/110V DC
Dimensions (LXWXH)mm	196X86X46

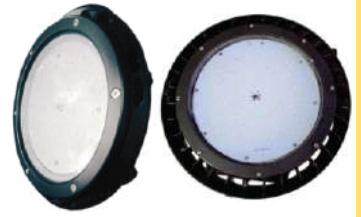


PIT LIGHT

Wattage	15/22W
Model Number	PL-11-E-L-WXOA
Supply	48V AC/DC
Dimensions (LXWXH)mm	280X250X50

HIGH BAY LIGHT

Wattage	80-100W	120-150W	200W
Model Number	PD-17-D-L-WXOB		
Supply	140-270V AC		
Dimensions (DiaXHmm)	244X130	321X130	332X130



INDOOR LIGHTING

LED T8 TUBE LIGHT/ROD

Wattage	18/22/24W
Model Number	PC-14-D-L-WXOA
Supply	140-270V AC, 110/220V DC
Dimensions (ft)	4



LED T5 TUBE LIGHT

Wattage	5/10/18/24W
Model Number	PC-14-D-L-WXOB
Supply	140-270V AC, 110/220V DC
Dimensions (ft)	1/2/4



DOWN LIGHT

Wattage	3W	6W	12W	18W
Model Number	PB-13-D-L-WXOA			
Supply	140-270V AC, 110/220V DC			
Dimensions (DiaXH)mm	92X35	105X42	126X42	150X42



INDOOR LIGHTING

SURFACE MOUNT DOWN LIGHT (ROUND)

Wattage	6W	12W	18W
Model Number	PB-15-D-L-WXOA		
Supply	100-270V AC		
Dimensions (DiaXD)mm	116X46	170X32	208X28



SURFACE MOUNT DOWN LIGHT (SQUARE)

Wattage	6W	12W	18W
Model Number	PB-15-D-L-WXOB		
Supply	100-270V AC		
Dimensions (LXWXH)mm	96x96x51	121x121x51	143x143x51



NON FLAME PROOF RECHARGEABLE WELL GLASS

Wattage	20W
Model Number	PD-18-D-L-WXOA
Supply	230V AC / 12V DC
Dimensions (DiaXH)mm	154X154



RECESSED MOUNT/CLEAN ROOM LIGHT (2X2)

Wattage	20W(1X1)	40(2X2)	60/80W(2X2)
Model Number	PB-12-D-L-WXOA		
Supply	230V AC		
Dimensions (LXWXH)mm	295X295	600X600X36	595X595X70



PYROTECH RANGE

DRIVER



CCTV



SENSOR



LED DISPLAY

ENVIROMENTAL DATA			
TIME		DATE	
06.05.09		16.05.09	
NO.	DESCRIPTION	CURR. VALUE	UNIT
1.	KILN STACK EMISSION	88888	mg/Nm3
2.	COAL MILL EMISSION	88888	mg/Nm3
3.	COOLER STACK EMISSION	88888	mg/Nm3
4.	CEMENT MILL STACK EMIS.	88888	mg/Nm3
5.	AMBIENT TEMPERATURE	88888	°C
6.	AMBIENT AIR QUALITY	88888	µg/Nm3
7.	RAIN FALL	88888	mm
DCL Ariyur			

FIRE ALARM SYSTEM



PRESSURE SENSOR



PYROTECH APPROVALS

- Research Centre Imarat
- DCMM (DRDO)
- North Eastern Railway
- North Central Railway
- NWR, Jaipur
- East Coast Railway
- South Central Railway
- South Western Railway
- DLW, DRDL, DCIL
- SAIL (IISCO, BSP, VSP)
- SAIL (Durgapur, RSP)
- MCGM
- MP Housing and Infrastructure Development Board, HUDA, MHADA
- EESL
- CIDCO
- NTPC
- HRRL
- Municipal Corporation Faridabad
- Pimpri Chinchwad Municipal Corporation
- PWD, Bhopal
- PWD, Maharashtra
- PWD, Chattisgarh
- PWD, Rajasthan
- PWD, Tamil Nadu
- PWD, West Bengal
- PWD, Lucknow
- R&B, Gandhinagar
- MES, Ahmedabad
- MES, Jabalpur
- MES, Jaipur
- MES (Eastern, South Western, Western Command)
- IOCL, Mumbai
- BRAHMOS
- HPCL, Mumbai Refinery
- HPCL, Visakhapatnam
- BPCL
- CPCL
- AVVNL, Ajmer
- Rail Wheel Factory
- GSECL
- JVNVL, Jodhpur
- GENCO (Maharashtra, Tamilnadu, Andhra Pradesh)
- BRBNMPL
- CEL
- State Bank of Hyderabad
- Port Trust (Chennai, Jawaharlal Nehru, Kandla, Mumbai)
- Mazagon Dock Shipbuilders Limited
- TATA Projects
- UTCL
- Goa Shipyard Limited
- Hindustan News Print
- Harish Chandra Research Institute
- Port Trust
- KSIEL
- NREDCAP
- OPTCL
- BHEL
- EIL
- NMDC
- Rajya Krishi Utpadan
- SPGCL (Maharashtra, Tamilnadu, Andhra Pradesh)
- BECIL
- MECON
- Schneider
- Siemens

GALLERY AT A GLANCE



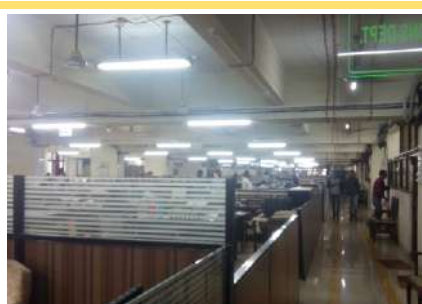
IOCL, Ahmedabad



Dena Bank, Mumbai



Airport, Jaipur



Churchgate Railway Station, Mumbai



GAIL, Vijapur



NTPC, Dadri(U.P.)



Celebration Mall, Udaipur



Aluminium Industry, Qatar



Rolling Industry, Oman

EXHIBITION PICTURES



China Exhibition, Guangzhou



Germany Exhibition, Frankfurt



Turkey Exhibition, Istanbul

ORDERING INFORMATION (LIGHT)

PX-YY- P - L - W X O Y

Input Supply

110-230V DC	A
24V DC	B
48V DC	C
110-270V AC	D
48V AC	E
12V DC	F
12V AC	G
24V AC	P

Wattage

Color of LED

Cool White	C
Warm White	W
Neutral White	N
Red	R
Green	G
Blue	B
Amber	A
Red + Green + Blue	RGB
3in1 RGB	RGB

Optical Lens Angle

No Lenses	00
8°	08
15°	15
25°	25
30°	30
45°	45
60°	60
135/55°	135



Contact: +91-294-2492123
Email: mktg@pyrotechlighting.com

Address: F-16A, Road No.3.MIA, Madri,
Udaipur - 313003, (Raj.), India

An ISO 9001 Certified Organization