

**48**  
YEARS OF  
EXCELLENCE

# LED LIGHTING PRODUCT CATALOGUE

AN ISO 9001/14001 CERTIFIED  
COMPANY (SINCE 1976)  
ZED & BIS CERTIFIED  
IN HOUSE NABL ACCREDITED LAB  
IN HOUSE R&D CENTER  
(DEPT. OF SCIENCE & TECHNOLOGIES)

# COMPREHENSIVE LIGHTING DESIGN SERVICES

## PYROTECH GROUP

Pyrotech is a leading manufacturing company, in the field of Industrial LED lighting, LED Display, CCMS, Occupancy Sensor, CCTV, Process Control Instrument, Panels & Temperature sensor, Fire alarm System. It caters to both commercial and institutional consumers and offers comprehensive lighting solutions across various applications areas. Since inception in 1976 Pyrotech group registered an average sales growth of 55%. Our quality products are manufactured with latest machinery in our 100,000 sq.ft. modern facility.

## PYROTECH ELECTRONICS PVT. LTD.:

Manufactures - Electrical Panels, control panels, control desks and industrial furniture.

## TEMPSENS INSTRUMENTS (I) PVT. LTD., UNIT-I & II :

Manufactures - Thermocouple, RTD, Non Contact Pyrometer, Temperature Calibrators, High Temperature Cables, Industrial Heaters, Thermal imager etc.

## PYROTECH WORKSPACE PVT. LTD.:

Designing, manufacturing and executing Control Room Solutions.



Pyrotech Technologies Pvt. Ltd.



Tempsens Instruments Pvt. Ltd. Unit-1



Tempsens Instruments Pvt. Ltd. Unit-2



Pyrotech Technologies Pvt. Ltd. - Annexe



Pyrotech Electronics Pvt. Ltd.



Pyrotech Workspace Pvt. Ltd.

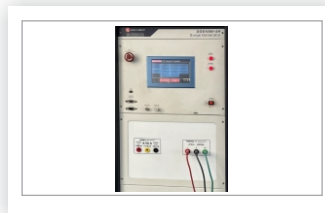
## OUR INFRASTRUCTURE



EMI/EMC TEST LAB



PHOTOMETRY LAB



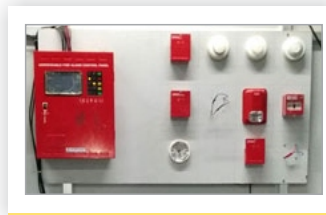
SURGE TEST MACHINE (10Kv)



HIGH VOLTAGE SYSTEM



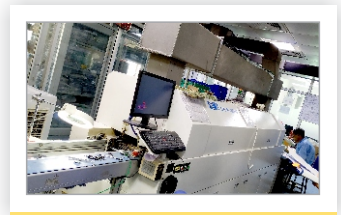
RELIABILITY TEST LAB



FIRE ALARM SYSTEM



ASSEMBLY LINE



AUTOMATIC SMT MACHINE

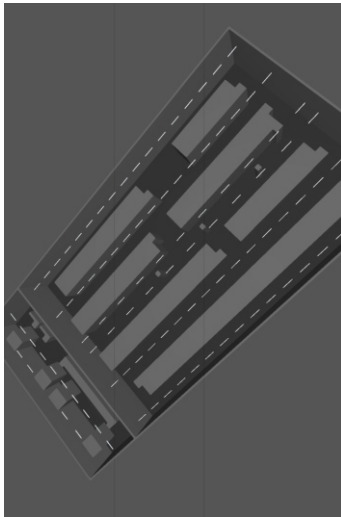
# COMPREHENSIVE LIGHTING DESIGN SERVICES

**Pyrotech** takes pride in offering a comprehensive range of in-house lighting design services tailored to meet our clients' specific needs.

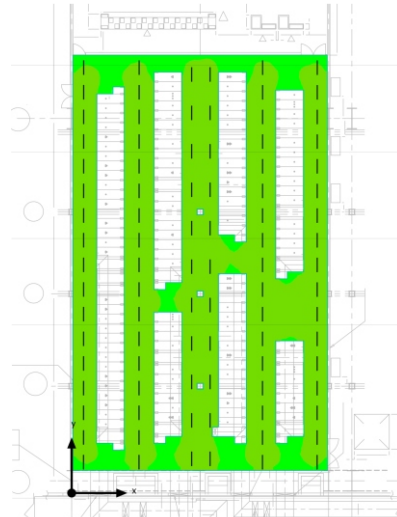
## DESIGNING SCOPE

- Lighting Design Calculation
- Conduit Layout Plan
- Lighting Layout Plan
- Power Distribution Supply

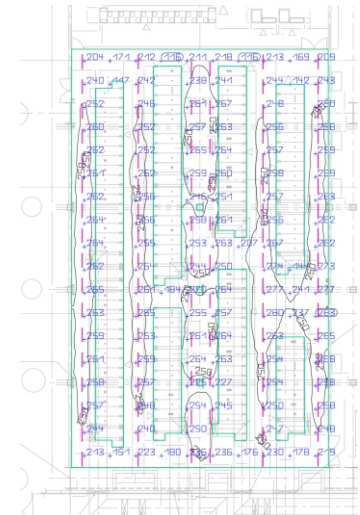
## LIGHTING LAYOUT DESIGN



3D LAYOUT



FALSE COLOR RENDERING



LUX LEVEL CALCULATION

## PROJECTS WE HAVE DONE

EPC	PROJECT
SIEMENS	<b>Ultratech Cement</b> - UTCL 14 Sprint Project, UTCL Happy Package, ACC Wadi
SCHNEIDER	<b>Dalmia Cement</b> - Bokaro, Sattur, Kadappa, Ariyalur, Adani, Dahej, Chettinad Kullur, Umrangso
ABB	<b>JSW Cement</b> - Fujairah (U.A.E.)
LNV TECHNOLOGIES	<b>Ambuja Cement</b> - Sindri, Sankrail, Bhatapara, Farakka, Salai Banwa.
JINDAL STEEL	Utility Project, Jajpur.
JSW STEEL	Coce Oven Vijaynagar, Blast Furnace Vijaynagar.
PARAMOUNT	IOCL Panipat, GAIL Usar, HPCL Vizag.
TOYO ENGINEERING	HPCL Rajasthan Refinery Limited
THYSSENKRUPP	THDC - Khurja STTP (2X660 MW) CHP LMS GPS
BHEL ISG WBDCL	Sagardighi (CHP & AHP) 1X660 MW Thermal Power Station
BHEL PEM	5X800 MW Yadadri Thermal Power Station (TSGENCO), 3X800 MW Patratu Thermal Power Station (NTPC), 1X660 MW Panki Thermal Power Station (NTPC)
LINXON	Chennai Metro Rail Limited (3 PSS)
SIEMENS	ADANI Data Center (Hyderabad, Noida).
MCGM	Beautification of Powai Lake.
KIRLOSKAR	NPCIL
O2 POWER	Solar Street Light (NHPC), Jaisalmer (Raj.), Agar (M.P.), Motala (M.H.).
L&T CONSTRUCTION	IOCL Gujarat.
KONSTELEC	TFL-ELECTRICAL WORKS, TALCHER, ODISHA [TFL OSBL 2425 021] <b>(PDIL)</b>
KEC INTERNATIONAL	IOCL Panipat, NTPC Khavada with Complete Instillation
KANTI PRASAD MITTAL	Augmentation of Transformation capacity by 1x500 MVA, 400/220kV ICT (4th) at Mysore <b>(PGCIL)</b>

# PYROTECH APPROVALS

## POWER



## CEMENT



## STEEL AND FERTILIZER



## OIL AND GAS



## SOLAR



RAILWAY: North Eastern Railway, South Eastern Railway, East Central Railway, North Central Railway, North Western Railway.

PWD : Raj, UP, Maharashtra, Chattisgarh, Tamilnadu, M.P., West Bengal, Punjab.

# WHY US... ?

Our luminaries have various advantages as described below:

- Surge protection > 10/20kV, which ensures maximum protection against high voltage surges (very common in India).
- **NABL Accredited LAB**
- In house testing facility - EMI/EMC, Surge, HV, Photometry.
- LED Drivers, an integral part of lights, are manufactured using state-of-the-art automated in house SMT machines.
- All the lights are tested at in-house light testing lab.
- 2/5 Year warranty.
- 440V AC Protection.
- Certifications such as IS10322, IP65, IEC 61000, LM79, Surge Test, Photometry from external test labs.
- Drivers tested for following IEC Certification : 61000-4-2, 61000-4-3, 61000-4-4, 61000-4-5, 61000-4-6, 61000-4-8 & 61000-4-11.
- Drivers tested for following IEC Compliance :- 61347-2-13, 62384, CISPR 15/EN55015.
- Power Factor > 0.9

## PYROTECH RANGE

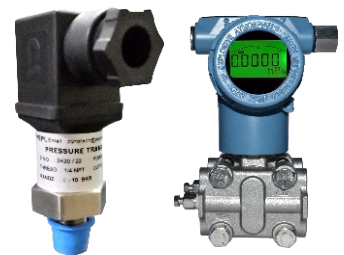
### DRIVER



### CCTV



### PRESSURE SENSOR



### LED DISPLAY

ENVIROMENTAL DATA		
	TIME	DATE
	08.05.09	16.03.09
Sl.	DESCRIPTION	CURR.VALUE UNIT
1.	KILN STACK EMISSION	88888 mg/Nm3
2.	COAL MILL EMISSION	88888 mg/Nm3
3.	COOLER STACK EMISSION	88888 mg/Nm3
4.	CEMENT MILL STACK EMIS.	88888 mg/Nm3
5.	AMBIENT TEMPERATURE	88888 °C
6.	AMBIENT AIR QUALITY	88888 µg/Nm3
7.	RAIN FALL	88888 mm

DCL Ariyur

### FIRE ALARM SYSTEM



### PROCESS CONTROL INSTRUMENTS

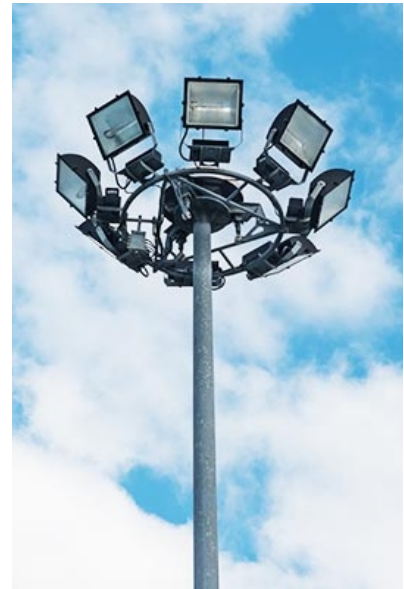


# OUTDOOR LIGHTING

## HIGH MAST LIGHT

**Pyrotech** offers an high mast light ideal for corrosive atmosphere, hot dipped galvanized high strength, light weight product.

- Wattage-350-500W
- Height 12.5 - 30 meter
- One high mast set having- 6/12 nos of light
- Double ring-6 nos lights on 1 ring
- Wind speed capacity 180km/hr
- Loco box included
- Aviation light on each high mast- 1 nos
- High efficiency light
- Energy saving 85%
- High power LEDs light
- Customized as per requirement.



## MOVEABLE - LIGHT TOWER

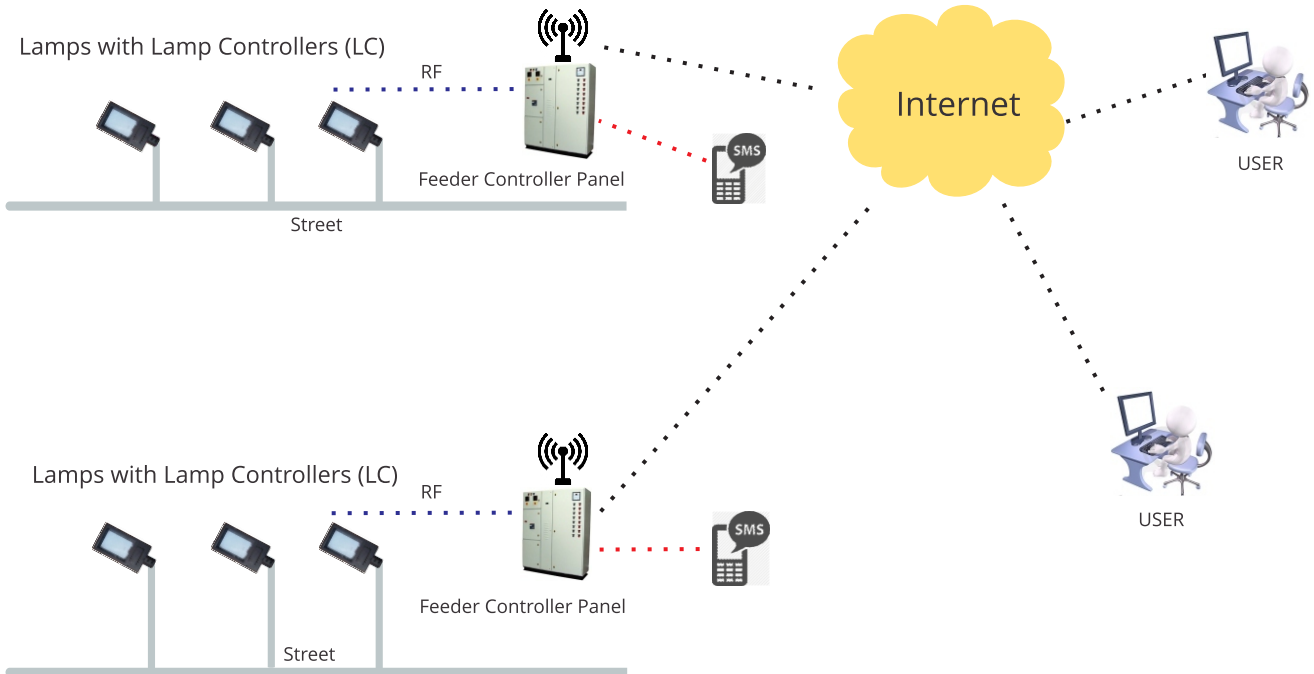


### FEATURES

- 70% Fuel saving with LED flood light
- Easy availability of spare parts anywhere in India.
- Cost effective and quick engine service.
- Dual power light tower grid & Diesel/Petrol engine.
- Long intervals in service & Maintenance.
- Dedicated call center for complaints.
- Fuel consumption 0.5 /1.0/2.0 lt/hr.
- Light coverage 5000/8000/10000 m<sup>2</sup>.

# OUTDOOR LIGHTING

## CCMS SYSTEM



## SENSOR BASED STREET LIGHTS

**INBUILT  
SENSOR**



### SENSOR STREET LIGHT (IP-66)

Wattage	10-45W	50-60W
Model Number	PE-11-D-L-WXOA	
Supply	140-270V AC	
Dimensions (LXWXH)mm	320X100X50	364X137X52

### SENSOR STREET LIGHT (IP-66)

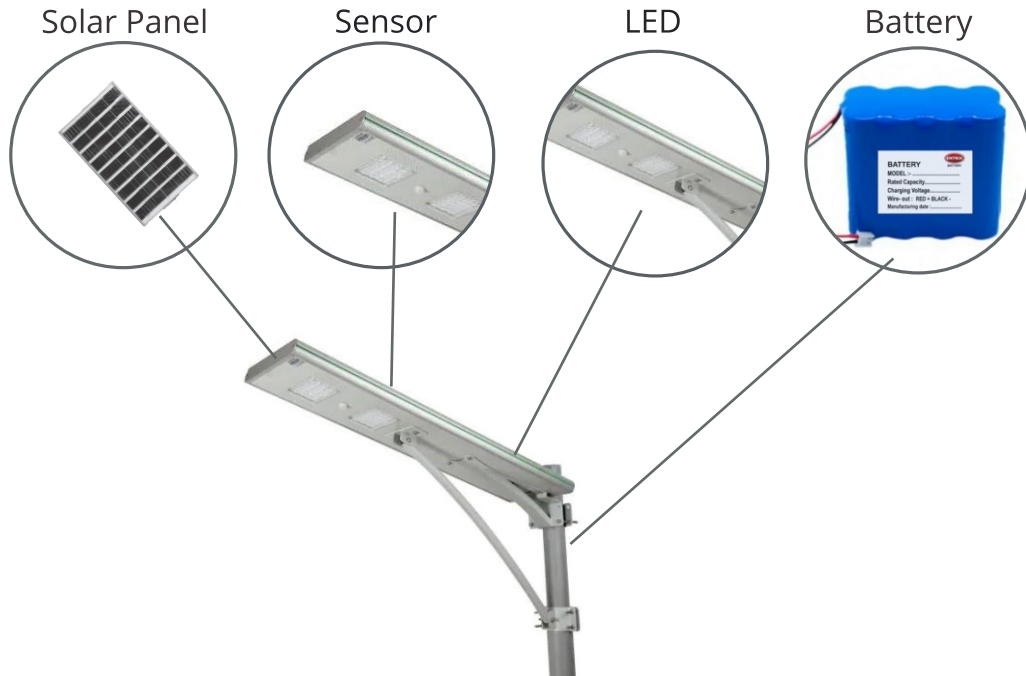
Wattage	80-100W	120W
Model Number	PE-11-D-L-WXOA	
Supply	140-270V AC	
Dimensions (LXWXH)mm	415X198X64	420X195X74



**INBUILT  
SENSOR**

# OUTDOOR LIGHTING

## SOLAR STREET LIGHT (ALL IN ONE)



### SOLAR STREET LIGHT (ALL IN ONE)

Wattage	10/20W	30/40W	60/80W	100W
Model Number	PH-11-A-L-WXOA			
Battery	12 Ah	24/30 Ah	42/66 Ah	78 Ah
Panel	30/45Wp	60/80Wp	100/150Wp	150Wp

### SEMI INTEGRATED LED SOLAR STREET LIGHT

Wattage	20/30W	40/50W	90-100W
Model Number	PH-11-A-L-WXOA		
Battery	24/36 Ah	48/60 Ah	60 Ah
Panel	60/75Wp	125/150Wp	400Wp



**Note:** Hybrid Controller Available on request model which operate on solar +230VAC

**Wattage:** Customized as per request

**Efficiency:** Customized as per request

**Battery option:** Customized as per request

# OUTDOOR LIGHTING

## FLOOD LIGHT

Wattage	10-30W	40-50W	60-70W
Model Number	PD-17-D-L-WXOA		
Supply	140-270V AC, 110/220V DC		
Dimensions (LXWXH)mm	160X155X42	213X203X46	235X143X55



## FLOOD LIGHT

Wattage	80-120W	130-150W	200-250
Model Number	PD-17-D-L-WXOA		
Supply	140-270V AC, 110/220V DC		
Dimensions (LXWXH)mm	282X248X50	308X286X63	407X302X75



## FLOOD LIGHT

Wattage	300-400W	500W	600-1000W
Model Number	PD-17-D-L-WXOA		
Supply	140-270V AC, 110/220V DC		
Dimensions (LXWXH)mm	495X460X60	640X400X175	As per Module



## FLOOD LIGHT

Wattage	10-30W	60-70W	80-150W	180-200W
Model Number	PD-17-D-L-WXOA			
Supply	24V AC/DC			
Dimensions (LXWXH)mm	213X203X46	235X193X55	335X270X70	407X302X75



# OUTDOOR LIGHTING



## STREET LIGHT (IP-66)

Wattage	10-45W	50-60W
Model Number	PE-11-D-L-WXOA	
Supply	140-270V AC	
Dimensions (LXWXH)mm	320X100X50	364X137X52

## STREET LIGHT (IP-66)

Wattage	80-100W	110-120W	150-200W
Model Number	PE-11-D-L-WXOA		
Supply	140-270V AC		
Dimensions (LXWXH)mm	415X198X64	420X196X74	500X245X70



## POST TOP LANTERN

Wattage	20-40W	50W
Model Number	PE-13-D-L-WXOA	
Supply	140-270V AC	
Dimensions DIAx(H)mm	280X350	410X450

## GARDEN / PATHWAY LIGHT/BOLLARD

Wattage	8/12W
Model Number	PD-15-D-L-WXOA
Supply	140-270V AC
Dimensions (DiaXH)mm	102X495



# INDUSTRIAL LIGHTING

## EMERGENCY / NON EMERGENCY EXIT LIGHT

Wattage	3W	12W
Model Number	PG-11-D-L-WXOA	
Supply	140-270V AC / 12V DC	
Dimensions (LXWXH)mm	227X310X10	360X180X55



## INDUSTRIAL EMERGENCY LIGHT

Wattage	2X10/2X20W
Model Number	PG-11-D-L-WXOA
Supply	12V DC/140-270V AC
Dimensions (LXWXH)mm	863X736X178

## SEARCH LIGHT (SECURITY APPLICATIONS)

Wattage	150W(Round)	200W(Rectangle)
Model Number	PU-17-D-L-WXOA	
Supply	230V AC	230V AC
Dimensions (DiaXH)mm	320X165	600X400X175



## NON FLAME PROOF WELL GLASS

Wattage	15-45W	50-60W	70-90W	120-150W
Model Number	PF-11-D-L-WXOB			
Supply	140-270V AC, 110/220V DC			
Dimensions (DiaXH)mm	133X115	154X154	176X183	227X115

# INDUSTRIAL LIGHTING

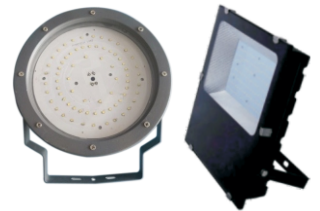


## FLAME PROOF WELL GLASS (ZONE IIA, IIB, IIC)

Wattage	25-80W	90-150W	200W
Model Number	PF-11-D-L-WXOA		
Supply	140-270V AC		
Dimensions (DiaXD)mm	163X123	300X192	300X192

## WELL GLASS / FLOOD LIGHT (Ex nR IIC T5 Gc)

Wattage	40-100W	120-150W
Model Number	PF-11-D-L-WXOB	PD-17-D-L-WXOA
Supply	230V AC	
Dimensions (DiaXH)mm	212X120	308X286X63



## FLAME PROOF HAND LAMP (ZONE IIA, IIB, IIC)

Wattage	15-20W	
Model Number	PK-11-P-L-WXOA	
Supply	140-270/24V AC	
Dimensions	127(Dia)X380(H)	



## FLAME PROOF TUBE LIGHT (ZONE IIA, IIB, IIC)

Wattage	20W	2X20W
Model Number	PC-14-D-L-WXOC	
Supply	140-270V AC, 110/220V DC	
Dimensions (LXWXH)mm	1385X160X150	1385X315X150



# INDUSTRIAL LIGHTING

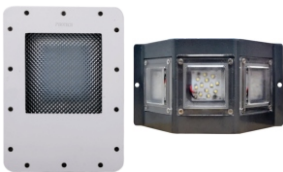


## HAND LAMP (CONFINED SPACE APPLICATION DURING SHUTDOWN)

Wattage	7W (GLASS)	20W (GLASS)	12W (ACRYLIC)
Model Number	PK-11-D-L-WXOA		
Supply	24V AC/140-270V AC		24V AC/140-270V AC
Dimensions (DiaXH)mm	102X258	102X268	102X212

## IP-65 TUBE LIGHT

Wattage	1X20W	2X20W	1X40W
Model Number	PC-14-D-L-WXOA		
Supply	140-270V AC		
Dimensions (ft) (L)	~2	~4	~4



## PIT LIGHT

Wattage	15/22W
Model Number	PL-11-E-L-WXOA
Supply	48V AC/DC
Dimensions (LXWXH)mm	280X200X50

## BULK HEAD

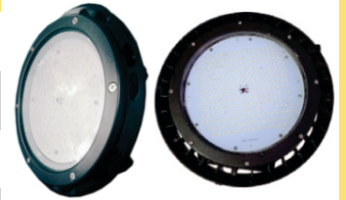
Wattage	10-15W
Model Number	PP-11-D-L-WXOA
Supply	230V AC/220/110V DC
Dimensions (LXWXH)mm	196X86X46



# INDUSTRIAL LIGHTING

## HIGH BAY LIGHT

Wattage	60-100	120-150	200
Model Number	PD-17-D-L-WXOB		
Supply	140-270V AC		
Dimensions (DiaXHmm)	244X130	321X127	332X130



## HIGH BAY LIGHT

Wattage	60-100	120-150	200
Model Number	PD-17-D-L-WXOB		
Supply	140-270V AC		
Dimensions (DiaXHmm)	244X130	321X127	332X130



## RECHARGEABLE FLOOD LIGHT

Wattage	10W	20W	30W	40-60W
Model Number	PD-18-P-L-WXOA			
Battery (DC/WH)	7.4/38.48	11.1/66.6	12.8/76.8	11.1X20.8
Dimensions (LXWXH)mm	243X115X110	282X179X110	318X202X114	300X240X72



## TRAFFIC LIGHT

Wattage	5W	9W
Model Number	PJ-11-D-L-WXOOA	
Supply	230V AC	
Dimensions (Ø)mm	200	300



# INDUSTRIAL LIGHTING

## AVIATION LIGHT

Wattage	6-14/2X6-14W	
Model Number	PG-12-D-L-WXOA	
Supply	140-270V AC	
Dimensions (DiaXLXH)mm	175X260	176X460X250



## LOW / MEDIUM INTENSITY AVIATION LIGHT



Wattage	6 / 36
Model Number	PG-12-D-L-WXOA
Supply	220-240V AC
Dimensions (DiaXLXH)mm	200X115 / 325 X 250

## AVIATION WARNING SPHERE LINE MARKERS

Catalogue No.	Aviation Warning Spheres (Line Markers) AWS
Weight	4- 5.5 kg approx
Drain Holes	05 Nos. (8-10 mm Dia)
Dia(mm)	600



## BIRD FLIGHT DIVERTER



LED Face of Warning Disk	6 LED Each (Total 12 LED)
Horizontal Position	360° Protection
Material	High strength polymer with working temperature range between 30° to 100°C.
Visibility	Upto 1km under clear conditions

# INDOOR LIGHTING

## SURFACE MOUNT DOWN LIGHT (ROUND)

Wattage	6W	12W	18W
Model Number	PB-15-D-L-WXOA		
Supply	100-270V AC		
Dimensions (Dia.xD)mm	110X32	165X32	220X32



## SURFACE MOUNT DOWN LIGHT (SQUARE)

Wattage	6W	12W	18W
Model Number	PB-15-D-L-WXOA		
Supply	100-270V AC		
Dimensions (LXWXH)mm	11X110X32	165X165X32	220X220X32



## RECESSED DOWN LIGHT(2X2)

Wattage	20W(1X1)	40/60/80W(2X2)
Model Number	PB-12-D-L-WXOA	
Supply	230V AC	
Dimensions (LXWXH)mm	300X300	600X600X36



## LED T8 TUBE LIGHT/ROD

Wattage	10/18/24W
Model Number	PC-14-D-L-WXOB
Supply	140-270V AC, 110/220V DC
Dimensions (ft)	2/4



# INDOOR LIGHTING

## LED T5 TUBE LIGHT FITTING



Wattage	5/10/18/24W
Model Number	PC-14-D-L-WXOB
Supply	140-270V AC, 110/220V DC
Dimensions (ft)	1/2/4

## RECESSED DOWN LIGHT (ROUND)



Wattage	3W	6W	12W	18W
Model Number	PB-13-D-L-WXOA			
Supply	140-270V AC, 110/220V DC			
Dimensions (DiaXH)mm	90X21	90X21	108X30	108X30

## RECESSED DOWN LIGHT(SQUARE)



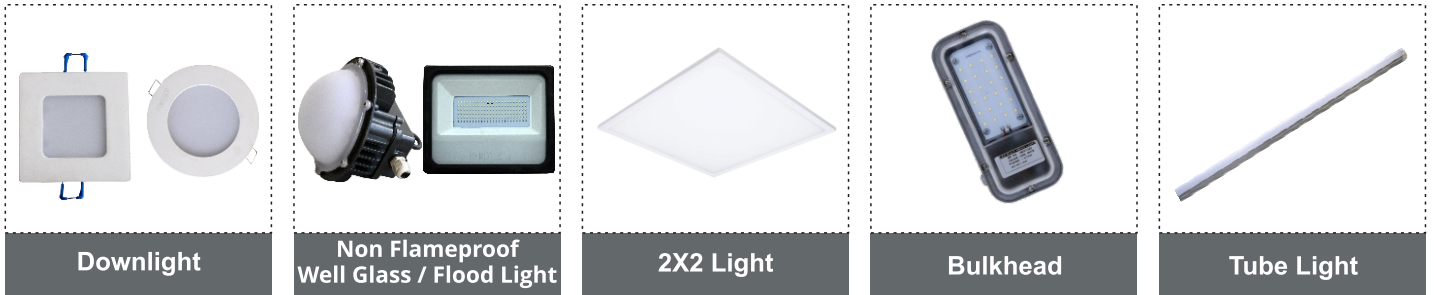
Wattage	3W	6W	12W	18W
Model Number	PB-13-D-L-WXOA			
Supply	140-270V AC, 110/220V DC			
Dimensions (DiaXH)mm	85X85X30	85X85X30	180X180X30	180X180X30

## LED CLEAN ROOM LIGHT



Wattage	30-50W
Model Number	PB-12-D-L-WXOA
Supply	140-270V AC
Dimensions (ft)	600X600

# DC LIGHTING



# EMERGENCY LIGHT WITH BATTERY BACKUP



# SPECIAL PRODUCTS

## \* -36°C Operated Light



## \* Sensor Based Light



## \* High Temp. (80°C)



# PRESSURE SENSOR / TRANSMITTER



## INTRINSIC SAFE PRESSURE SENSOR

Type	Gauge Pressure, Absolute pressure, Negative Pressure
Measuring Range	100m Bar to 600 Bar
Accuracy	± 0.1% of FS
Output Signal	4-20mADC
Protection Class	IP 66
<b>Standards - IS / IEC</b>	<b>Ex ia IIC T6 Ga, Ex ia IIC T<sub>200r</sub>, Ex ia I Ma</b>

## INDUSTRIAL PRESSURE SENSOR

Type	Gauge Pressure, Absolute pressure, Negative Pressure
Measuring Range	100m Bar to 600 Bar
Accuracy	± 0.25% of FS , ±0.5% of FS
Output Signal	4-20mADC, 0-10Vdc, 0.5-4.5Vdc
Operating Temperature	(-)20 to 110Degc
Protection Class	IP 65



## RAILWAY PRESSURE SENSOR WITH DIFFERENTIAL AMPLIFIER



Type	Relative (gauged)
Measuring Range	(-)1 to 400 Bar
Compensated temperature range	-10 ... 60 °C
Long term stability	≤ 0.2 % FSR
Output Signal	4-20mADC
Response Time	<1ms
Connector	ITT canon

## HHGP SMART TYPE PRESSURE TRANSMITTER

Type	2 Wire
Measuring Range	0-0.25KPa-40,000 kpa
Accuracy	±0.25%, ±0.06% (optional)
Wetted Parts Material	SS316L, Hastelloy C, Tantalum
Operating Temperature	-40°C ~+120°C
Ambient Temperature	(-)10 to 100°C
Output	4-20mA, Digital communication Via HART
<b>Safety Protection</b>	<b>Ex db IIC T6 Gb (PESO Approved)</b>



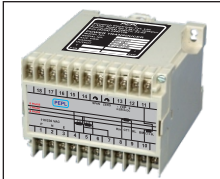
## HHDP SMART TYPE DIFFERENTIAL PRESSURE TRANSMITTER



Type	2 Wire
Measuring Range	0-1.2 to 10,000 kpa
Accuracy	±0.25%, ±0.075% (optional)
Wetted Parts Material	SS316L, Hastelloy C, Tantalum
Operating Temperature	-40°C ~+120°C
Output	4-20mA, Digital communication Via HART
<b>Safety Protection</b>	<b>Ex db IIC T6 Gb (PESO Approved)</b>

# PROCESS CONTROL INSTRUMENTS

## ELECTRICAL TRANSDUCER



**Active Power Transducer**



**Tap Position Transducer**



**Reactive Power Transducer**



**Current/Voltage Transducer**

## DIGITAL INDICATORS



**Mini Indicators ( $\mu$  Based)**



**Large Display Digital Indicators**



**Digital Indicators**



**Digital Controllers ( $\mu$  Based)**

## TEMPERATURE TRANSMITTER



**Yoke/HART Mounted Transmitter with Display**



**Head/HART Mounted Transmitter**



**Field/Dinrail/HART Mounted Trans.**

## MATERIAL HANDLING SWITCHES



**Pull Chord Switch**



**Belt Sway Switch**



**Low Speed Switch**

## MULTI FUNCTION METER



**MFM**

## SOUND TRANSMITTER



**Electronics Ear**

# IP VIDEO SURVEILLANCE SYSTEM

We deal in end-to-end solutions for IP Video Surveillance as well as other solution for plant that optimized production and safety. We design solution as per client required for optimized production and increase Safety of plant i.e. Wireless CCTV System for Crane operator, Water cooling housing for furnace area, Portable HD Visual inspection equipment for chimney, under water etc.

## Our main strengths as below: -

- Designing
- Management
- Installation and commissioning
- Service support across Pan India
- Engineering
- Testing
- Training
- Detailed documentation



Dome Housing IP Camera



Bullet Camera

We have done lots of turnkey projects for Cement Plant, Steel Plant, Substation, Oil Refinery, Power Generation Plants.

# WATER COOLING HOUSING FOR HIGH TEMPERATURE AREA

**Introduction:** In industries there are many places such as hot plate mill, furnace, conveyor belt, hot plate rolling mill etc, where temperature ranges from 80°C to 400°C. At these places one cannot stand to view process, and monitoring of process is not possible by normal cameras and housing.

## Solution:

Pyrotech provides water cooling or air purging housing which can withstand temp. upto 400°C. Air, nitrogen or water flow is used through housing to reduce temp. upto 42°C inside the housing.

## Features of Pyrotech make housing:

- Weather proof standard IP65/ Ip66
- Material of construction: SS304
- Use of toughened glass for temp up to 120°C
- Use of tempered glass for temp up to 290°C
- Use of quartz glass for temp up to 400°C
- Air purging housing is used for dusty area



# LED DISPLAY BOARD



HINDUSTAN PETROLEUM CORPORATION LIMITED					22/06/2019	
TANK TRUCK FANSLIP BOARD					17:59:39	
SN	TRUCK NO	DESTINATION	RAY NO	STATUS	THROUT TIMER	FAN ETA
3	GJ01HT0423	AHMEDABAD	0	REGISTERED	-	11 MIN
4	GJ18X9063	AHMEDABAD	0	REGISTERED	-	12 MIN
5	GJ1DT1406	AHMEDABAD	0	REGISTERED	-	12 MIN
6	GJ1DT8633	BHADAJ,AHMEDABAD	0	REGISTERED	-	13 MIN

# ADDRESSABLE FIRE DETECTION & ALARM SYSTEMS

## FIRE ALARM CONTROL PANEL (PY-CP-4A)

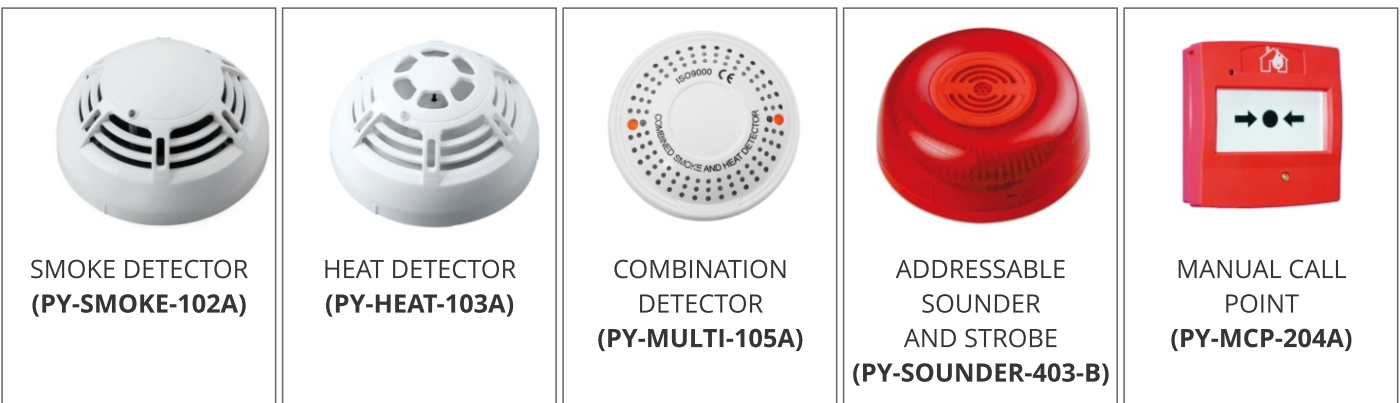
Pyrotech 4 Loop intelligent addressable fire alarm control panel is a range of analogue addressable, microprocessor-based fire alarm control equipment, its support in flexibility in both design and operation. It's designed to provide early warning fire detection, to quickly identify the location of fire and provide text information.

- 2 loop, 4 loop Panel, (6 loop standalone)
- Support 254 Devices (1,524 ideal)
- Network up to 512 Node
- Programmable Capacity
- Zones up to 3000
- Sounders Groups 1-1000
- Modules Groups 1001- 2000
- Built-in 160 LED Zones Indicator



### Features:

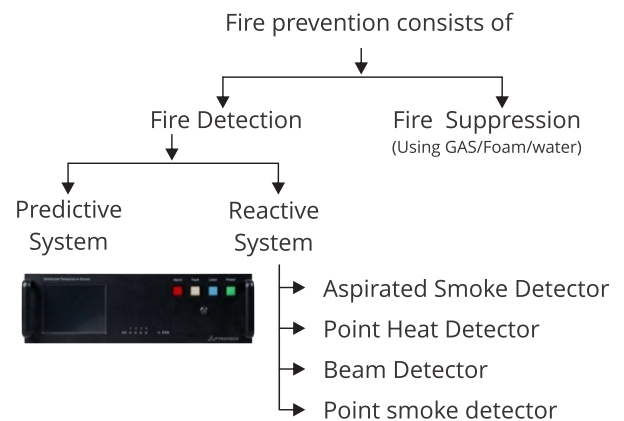
- ⤴ Using advance microprocessor technology with large memory capacity
- ⤴ LCD Touch screen and keypad access
- ⤴ Support real time visual algorithm
- ⤴ Protection of false alarm
- ⤴ Keypad and PC programming
- ⤴ Built-in Multiple interface protocol such as USB
- ⤴ Support Loop Powered devices for extra saving on cable cost
- ⤴ Built-In Printer and 160 LED Zones Indicators



Fire Automatic  
Suppression System



Explosion-proof Ultraviolet  
and Infrared 2 Flame Detector  
**(PEPL-UVIR2-V1)**



**Fiber Optic Based Fire Detection System**

# GALLERY AT A GLANCE



NTPC -DADRI



HPCL Rajasthan Refinery Ltd.



CPCL



Mangolia Refinery



Dalmia Cement- Ariyalur



JSW- Fujairah (U.A.E.)



TATA Steel

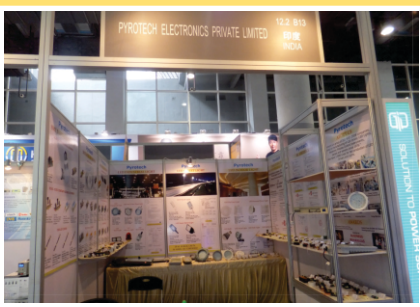


NRL



Rolling Industry, Oman

# EXHIBITION PICTURES



China Exhibition, Guangzhou



Germany Exhibition, Frankfurt



Turkey Exhibition, Istanbul

# ORDERING INFORMATION (LIGHT)

PX-YY-P-L-W X O Y

## Input Supply

110-230V DC	A
24V DC	B
48V DC	C
110-270V AC	D
48V AC	E
12V DC	F
12V AC	G
24V AC	P

## Wattage

## Color of LED

Cool White	C
Warm White	W
Neutral White	N
Red	R
Green	G
Blue	B
Amber	A
Red + Green + Blue	RGB
3in1 RGB	RGB

## Optical Lens Angle

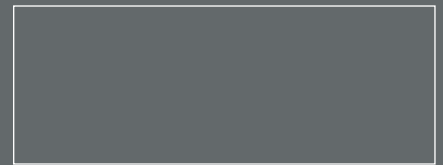
No Lenses	00
8°	08
15°	15
25°	25
30°	30
45°	45
60°	60
135/55°	135



Contact: +91-294-2492123

Email : [mktg@pyrotechlighting.com](mailto:mktg@pyrotechlighting.com)

Address: F-16A, Road No.3.MIA, Madri,  
Udaipur - 313003, (Raj.), India



An ISO 9001 Certified Organization

**PYROTECH TECHNOLOGIES PVT. LTD.**

Formerly known as Pyrotech Electronics Pvt. Ltd.